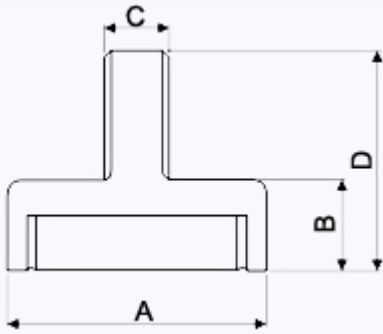


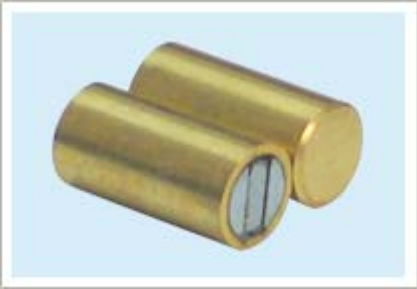
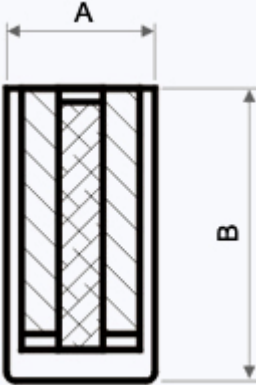
POT01 SERIES



Item Code	POT					Magnet	coated	Pull Force(N)
	Material	A	B	C	D			
POTF01-10	Fe37	10	4.5	M3	11.5	Ferrite	Zn	4
POTF01-13	Fe37	13	4.5	M3	11.5	Ferrite	Zn	10
POTF01-15	Fe37	15	5	M4	17	Ferrite	Zn	15
POTF01-16	Fe37	16	4.5	M3	11.5	Ferrite	Zn	18
POTF01-20	Fe37	20	6	M3	13	Ferrite	Zn	30
POTF01-22	Fe37	22	7	M5	17	Ferrite	Zn	35
POTF01-22A	Fe37	22	6	M5	16	Ferrite	Ni	35
POTF01-22B	Fe37	22	6.5	M5	16.5	Ferrite	Zn	35
POTF01-23	Fe37	23	7	M5	20	Ferrite	Zn	35
POTF01-25	Fe37	25	7	M4	15	Ferrite	Zn	40
POTF01-32	Fe37	32	7	M5	23	Ferrite	Zn	80
POTF01-32A	Fe37	32	7	M6	23	Ferrite	Zn	80
POTF01-32B	Fe37	32	7	M4	15	Ferrite	Zn	80
POTF01-57	Fe37	57	10.5	M6	15.5	Ferrite	Black paint	280
POTF01-63	Fe37	63	14	M8	27	Ferrite	Zn	350
POTN01-10	Fe37	10	4.5	M4	12.5	NdFeB	Zn	25
POTN01-13	Fe37	13	4.5	M5	12.5	NdFeB	Zn	30
POTN01-14	Fe37	14	12	M5	29	NdFeB	Ni	40
POTN01-16	Fe37	16	4.5	M6	12.5	NdFeB	Zn	60
POTN01-16A	Fe37	16	4.5	M5	14.5	NdFeB	Zn	60
POTN01-16B	Fe37	16	5	M4	13	NdFeB	Ni	60
POTN01-16C	Fe37	16	4.5	M6	36.5	NdFeB	Zn	60
POTN01-18	Fe37	18	7	M5	17	NdFeB	Zn	100
POTN01-20	Fe37	20	7	M5	17	NdFeB	Zn	100
POTN01-20A	Fe37	20	7	M6	14	NdFeB	Zn	100
POTN01-20B	Fe37	20	6	M6	16	NdFeB	Zn	140
POTN01-20E	Fe37	20	7	M5	17	NdFeB	Zn	100
POTN01-20F	Fe37	20	6	M6	16	NdFeB	Zn	120
POTN01-20G	Fe37	20	7	M4	15	NdFeB	Zn	110
POTN01-22	Fe37	22	7	M5	17	NdFeB	Zn	150
POTN01-25A	Fe37	25	7	M6	17	NdFeB	Zn	270

POTN01-25B	Fe37	25	7	D10	25	NdFeB	Zn	270
POTN01-25D	Fe37	25	7	M6	17	NdFeB	Zn	270
POTN01-25E	Fe37	25	7	M6	17	NdFeB	Zn	215
POTN01-30	Fe37	30	5	M6	25	NdFeB	Ni	300
POTN01-30A	Fe37	30	5	M6	28	NdFeB	Zn	220
POTN01-32	Fe37	32	7	M6	10.5	NdFeB	Zn	300
POTN01-32A	Fe37	32	7	M6	19	NdFeB	Zn	300
POTN01-32B	Fe37	32	7	M6	17	NdFeB	Zn	360
POTN01-32C	Fe37	32	7	M6	17	NdFeB	Rubber	160
POTN01-32D	Fe37	32	7	M6	12	NdFeB	Zn	350
POTN01-32F	Fe37	32	7	M4	15	NdFeB	Ni	350
POTN01-35	Fe37	35	7	M6	19	NdFeB	Zn	300
POTN01-35A	Fe37	35	15	M6	40	NdFeB	Zn	400
POTN01-35B	Fe37	35	7	M6	19	NdFeB	Zn	300
POTN01-35C	Fe37	35	7	M8	37	NdFeB	Zn	300
POTN01-60	Fe37	60	12	M12	42.2	NdFeB	Zn	
POTN01-60A	Fe37	60	12	M16	42.2	NdFeB	Zn	
POTN01-66	Fe37	60	3	M8	20	NdFeB	Rubber	195
POTN01-80	Fe37	80	12	M20	42.2	NdFeB	Zn	
POTN01-88	Fe37	80	3	M8	20	NdFeB	Rubber	430

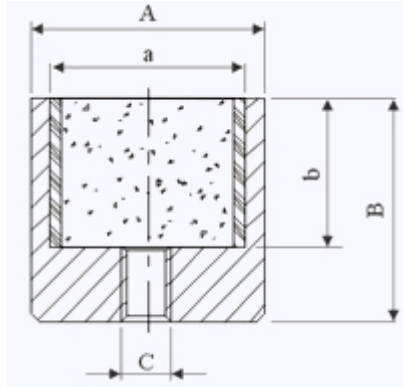
**POT02 SERIES**



Item Code	POT			Magnet	Pull Force(N)
	Material	A	B		
POTN02-06	Brass	6	20	NdFeB	10
POTN02-08	Brass	8	20	NdFeB	25
POTN02-08A	Fe37	8	20	NdFeB	25
POTN02-10	Brass	10	20	NdFeB	45
POTN02-13	Brass	13	20	NdFeB	70
POTN02-16	Brass	16	20	NdFeB	
POTN02-20	Brass	20	25	NdFeB	
POTN02-25	Brass	24.95	48.7	NdFeB	110
POTN02-25A	Brass	25	30	NdFeB	

POTN02-32	Brass	32	35	NdFeB	
POTF02-25	Al	25.4	30.2	Ferrite	170

### POTO3 SERIES

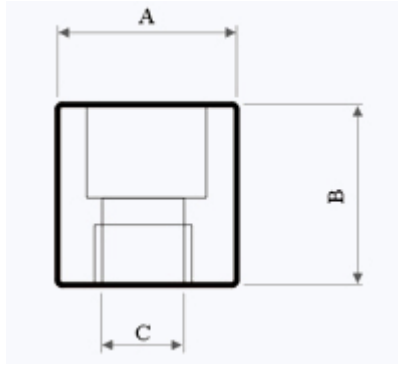


Item Code	POT				Magnet	Coated	Pull Force (N)
	Material	A	B	C			
POTA03-08	Fe37	8	8	M3	ALNiCo	Zn	5
POTA03-9.5	Fe37	9.5	15	M3	ALNiCo	Zn	8
POTA03-9.5A	Fe37	9.5	15.8	M3	ALNiCo	Zn	8
POTA03-10	Fe37	10	10	M3	ALNiCo	Zn	8
POTA03-12	Fe37	12	16	M5	ALNiCo	Zn	15
POTA03-12A	Fe37	12	16	M5	ALNiCo	Red Paint	15
POTA03-12B	Fe37	12	17	M3	ALNiCo	Zn	10
POTA03-12C	Fe37	12	17	M4	ALNiCo	Zn	10
POTA03-12.7	Fe37	12.7	15.8	M4	ALNiCo	Zn	15
POTA03-12.7A	Fe37	12.7	15.8	M5	ALNiCo	Red Paint	15
POTA03-16	Fe37	16	20	M4	ALNiCo	Zn	18
POTA03-17	Fe37	17	20	M4	ALNiCo	Zn	18
POTA03-17.5	Fe37	17.5	15.8	M6	ALNiCo	Zn	25
POTA03-17.5A	Fe37	17.5	16	M6	ALNiCo	Red Paint	25
POTA03-17.5B	Fe37	17.5	16	M6	ALNiCo	Zn	
POTA03-20	Fe37	20	24	M4	ALNiCo	Zn	42
POTA03-20A	Fe37	20	24	M6	ALNiCo	Zn	42
POTA03-20B	Fe37	20	16.2	M4	ALNiCo	Gr	
POTA03-20C	Fe37	20	24	M6	ALNiCo	Zn	
POTA03-20.6	Fe37	20.6	19	M6	ALNiCo	Zn	40
POTA03-20.6A	Fe37	20.6	19	M6	ALNiCo	Red Paint	40
POTA03-24	Fe37	24	30	M5	ALNiCo	Zn	80
POTA03-25.4	Fe37	25.4	21	M10	ALNiCo	Zn	100
POTA03-27	Fe37	27	25.4	M6	ALNiCo	Zn	60
POTA03-27A	Fe37	27	25.4	M6	ALNiCo	Red Paint	60
POTA03-27B	Fe37	27	25.4	M6	ALNiCo	Red Paint	

POTA03-27C	Fe37	27	25.4	10-32	ALNiCo	Red Paint	
POTA03-32	Fe37	32	40	M8	ALNiCo	Zn	180
POTA03-35	Fe37	35	30	M8	ALNiCo	Zn	150
POTA03-35A	Fe37	35	30	M8	ALNiCo	Zn	150
POTA03-35B	Fe37	35	20	M6	ALNiCo	Zn	180
POTA03-35C	Fe37	35	20	M6	ALNiCo	Red Paint	180
POTA03-35D	Fe37	35	42	M6	ALNiCo	Zn	200
POTA03-35E	Fe37	35	42	M10	ALNiCo	Zn	200
POTA03-35F	Fe37	35	30.1	M6	ALNiCo	Zn	180
POTA03-45	Fe37	45	30	M8	ALNiCo	Zn	250
POTA03-45A	Fe37	45	30	M8	ALNiCo	Red Paint	250

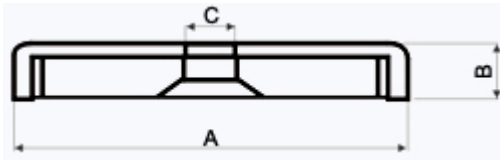
POTA03-45B	Fe37	45	44	M10	ALNiCo	Zn	240
POTA03-45C	Fe37	45	25	M6	ALNiCo	Red Paint	180
POTA03-45D	Fe37	45	44	M8	ALNiCo	Zn	240
POTA03-50	Fe37	50	40	M8	ALNiCo	Zn	250
POTA03-50A	Fe37	50	40	M8	ALNiCo	Red Paint	250
POTN03-10	Fe37	10	10	M4	NdFeB	Ni	
POTN03-15	Fe37	15	15	M4	NdFeB	Cr	80
POTN03-19	Fe37	19	8	M5	NdFeB	Ni	135
POTN03-20	Fe37	20	15	M4	NdFeB	Cr	120
POTN03-20A	Fe37	20	10	M3	NdFeB	Ni	170
POTN03-28	Fe37	28	9.5	M6	NdFeB	Zn	250
POTN03-30	Fe37	30	10	M6	NdFeB	Ni	200
POTN03-30A	Fe37	30	25	M8	NdFeB	Ni	
POTN03-33	Fe37	33	22	M6	NdFeB	Cr	
POTN03-38	Fe37	38	10.5	M6	NdFeB	Zn	500
POTN03-40	Fe37	40	15	M6	NdFeB	Ni	500
POTN03-40A	Fe37	40	20	M6	NdFeB	Ni	500
POTN03-40B	Fe37	40	30	M8	NdFeB	Ni	
POTN03-45	Fe37	45	16	M8	NdFeB	Zn	450
POTN03-50	Fe37	50	40	M8	NdFeB	Ni	
POTS03-15	Fe37	15	15	M6	YXG26	Ni	
POTS03-22	Fe37	22	20	M6	YXG26	Ni	92

**POT03B SERIES**



Item Code	POT				Magnet	coating	Pull Force(N)
	Material	A	B	C			
POTN03B-06	Fe37	6	6	M3	NdFeB	Cr	10
POTN03B-08	Fe37	8	6	M3	NdFeB	Cr	20
POTN03B-10	Fe37	10	18	M4	NdFeB	Cr	35
POTN03B-12	Fe37	12	8	M4	NdFeB	Cr	35
POTN03B-15	Fe37	15	18	M5	NdFeB	Cr	80
POTN03B-19	Fe37	19	8	M4	NdFeB	Cr	120
POTN03B-20	Fe37	20	18	M6	NdFeB	Cr	120
POTN03B-29	Fe37	29	10	M5	NdFeB	Cr	350

#### POTO4 SERIES

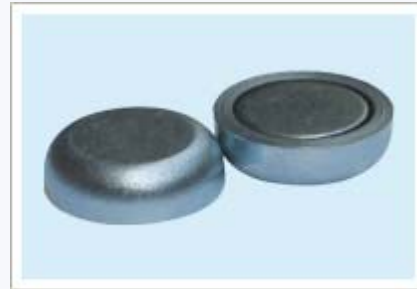
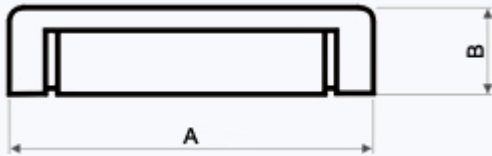


Item Code	POT				Magnet	Coating	Pull force (N)
	Material	A	B	C			
POTA04-19	Fe37	19	7.75	M4	ALNICO	Red Paint	4
POTA04-19A	Fe37	19	7.75	M4	ALNICO	Zn	4
POTA04-19B	Fe37	19	8	M4	ALNICO	Red Paint	4
POTA04-19C	Fe37	19	7.75	M4	ALNICO	Zn	4
POTA04-19D	Fe37	19.1	8	Φ4.2	ALNICO	Zn	
POTA04-28.5	Fe37	28.5	8.75	M6	ALNICO	Red Paint	6.5
POTA04-28.5A	Fe37	28.5	8.75	M6	ALNICO	Zn	6.5
POTA04-28.5B	Fe37	28.5	8.75	M6	ALNICO	Red Paint	6.5
POTA04-28.5C	Fe37	28.5	8.75	M6	ALNICO	Zn	6.5

POTA04-29	Fe37	28.6	8.8	Φ5	ALNICO	Zn	7
POTA04-38	Fe37	38	10.6	M5	ALNICO	Zn	
POTA04-40	Fe37	40	10.5	M6	ALNICO	Red Paint	12.5
POTA04-40A	Fe37	40	10.5	M6	ALNICO	Zn	12.5
POTA04-40B	Fe37	40	10.5	M6	ALNICO	Red Paint	12.5
POTA04-40C	Fe37	40	10.5	M6	ALNICO	Zn	12.5
POTF04-16	Fe37	16	4.5	Φ3.3	Ferrite	Cr	14
POTF04-16B	Fe37	16	4.5	Φ3.5	Ferrite	Zn	
POTF04-20	Fe37	20	6	Φ4.2	Ferrite	Cr	27
POTF04-20A	Fe37	20	6	Φ4.2	Ferrite	Zn	27
POTF04-25	Fe37	25	7	Φ5.5	Ferrite	Cr	30
POTF04-25A	Fe37	25	7	Φ5.5	Ferrite	Zn	30
POTF04-25B	Fe37	25	7	Φ5.5	Ferrite	Zn	
POTF04-32	Fe37	32	7	Φ5.5	Ferrite	Zn	60
POTF04-32A	Fe37	32	7	Φ5.5	Ferrite	Zn	72
POTF04-32B	Fe37	32	6.8	Φ5.5	Ferrite	Cr	72
POTF04-40	Fe37	40	8	Φ5.5	Ferrite	Cr	90
POTF04-40B	Fe37	40	8	Φ5.5	Ferrite	Zn	130
POTF04-50	Fe37	50	10	Φ8.5	Ferrite	Zn	180
POTF04-50A	Fe37	50	12	Φ6	Ferrite	Cr	18kg
POTF04-50B	Fe37	50	10	Φ6.5	Ferrite	Zn	
POTF04-80	Fe37	80	18	Φ8.5	Ferrite	Zn	
POTF04-90	Fe37	90	12.2	Φ10	Ferrite	Zn	490
POTN04-13	Fe37	13	4.5	Φ3.5	NdFeB	Zn	35
POTN04-14	Fe37	14	6	Φ4.5	NdFeB	Zn	12
POTN04-14A	Fe37	14	4	Φ5	NdFeB	Zn	
POTN04-15	Fe37	15	6	Φ4.8	NdFeB	Ni	35
POTN04-16	Fe37	16	4.5	Φ3.5	NdFeB	Zn	55
POTN04-16A	Fe37	16	4.5	Φ3.5	NdFeB	Zn	35
POTN04-20	Fe37	20	4.8	Φ3.2	NdFeB	Zn	95
POTN04-20A	Fe37	20	6	Φ4.5	NdFeB	Zn	100
POTN04-20B	Fe37	20	7	Φ4.5	NdFeB	Zn	65
POTN04-20C	Fe37	20	6	Φ4.2	NdFeB	Ni	100
POTN04-22	Fe37	22	6	Φ6	NdFeB	Zn	27
POTN04-22A	Fe37	22	6	Φ6	NdFeB	Cr	
POTN04-25	Fe37	25	7	Φ4.5	NdFeB	Zn	170
POTN04-25A	Fe37	25	8	Φ5.4	NdFeB	Ni	
POTN04-25B	Fe37	25	8	Φ5.5	NdFeB	Zn	
POTN04-25C	Fe37	25	7	Φ5	NdFeB	Zn	
POTN04-28	Fe37	28	9.5	Φ4	NdFeB	Zn	280
POTN04-32	Fe37	32	8.1	Φ5.5	NdFeB	Zn	330
POTN04-32A	Fe37	32	7	Φ5.5	NdFeB	Zn	350

POTN04-38	Fe37	38	10.5	Φ4	NdFeB	Zn	500
POTN04-40	Fe37	40	8	Φ5.5	NdFeB	Zn	500
POTN04-40A	Fe37	40	8	Φ5.5	NdFeB	Zn	450
POTN04-42	Fe37	42	9	Φ6.5	NdFeB	Zn	400

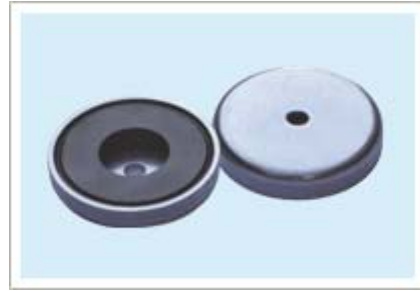
### POT05 SERIES



Item Code	POT			Magnet	coating	Pull Force(N)
	Material	A	B			
POTF05-10	Fe37	10	4.5	Ferrite	Zn	3
POTF05-13	Fe37	13	4.5	Ferrite	Zn	10
POTF05-16	Fe37	16	4.5	Ferrite	Zn	18
POTF05-17	Fe37	17	5	Ferrite	Zn	24
POTF05-20	Fe37	20	6	Ferrite	Zn	30
POTF05-22	Fe37	22	4	Ferrite	Zn	34
POTF05-23	Fe37	22.8	5.2	Ferrite	Zn	45
POTF05-25	Fe37	25	7	Ferrite	Zn	40
POTF05-32	Fe37	32	7	Ferrite	Zn	80
POTF05-36	Fe37	36	7.7	Ferrite	Zn	100
POTF05-40	Fe37	40	8	Ferrite	Zn	125
POTF05-47	Fe37	47	9	Ferrite	Zn	180
POTF05-50	Fe37	50	10	Ferrite	Zn	220
POTF05-57	Fe37	57	10.5	Ferrite	Zn	280
POTF05-63	Fe37	63	14	Ferrite	Zn	350
POTF05-80	Fe37	80	18	Ferrite	Zn	600
POTF05-100	Fe37	100	22	Ferrite	Zn	900
POTF05-125	Fe37	125	26	Ferrite	Zn	1300
POTN05-06	Fe37	6	4.5	NdFeB	Zn	5
POTN05-08	Fe37	8	4.5	NdFeB	Zn	13
POTN05-10	Fe37	10	4.5	NdFeB	Zn	25
POTN05-13	Fe37	13	4.5	NdFeB	Zn	50
POTN05-16	Fe37	16	4.5	NdFeB	Zn	95
POTN05-16A	Fe37	16	4	NdFeB	Zn	135
POTN05-16B	Fe37	16	4.5	NdFeB	Zn	85
POTN05-16D	Fe37	16	6.75	NdFeB	Ni	

POTN05-18	Fe37	18	5.5	NdFeB	Ni	75
POTN05-19	Fe37	19	5.6	NdFeB	Zn	85
POTN05-20	Fe37	20	6	NdFeB	Zn	140
POTN05-21	Fe37	21	4.2	NdFeB	Ni	180
POTN05-25	Fe37	25	7	NdFeB	Zn	200
POTN05-25A	Fe37	25	8	NdFeB	Ni	200
POTN05-30	Fe37	30	5.1	NdFeB	Ni	200
POTN05-30A	Fe37	30	8.9	NdFeB	Epoxy	215
POTN05-32	Fe37	32	7	NdFeB	Zn	350
POTN05-32A	Fe37	32	8	NdFeB	Ni	350
POTN05-45	Fe37	45	7	NdFeB	Ni	200
POTN05-45A	Fe37	45	8	NdFeB	Ni	200
POTS05-25	Fe37	25	7	SmCo	Zn	150

### POT06 SERIES



Item Code	POT				Magnet	coating	Pull Force (N)
	Material	A	B	C			
POTF06-24	Fe37	24	4.9	3.2	Ferrite	Zn	30
POTF06-24A	Fe37	24	4.9	6.75	Ferrite	Zn	30
POTF06-31.7	Fe37	31.7	5	6.1	Ferrite	Zn	30
POTF06-32	Fe37	32	6	6	Ferrite	Cr	60
POTF06-35.5	Fe37	35.5	7	4.8	Ferrite	Ni	60
POTF06-36B	Fe37	36	7	4.8	Ferrite	Ni	70
POTF06-45	Fe37	45	10.3	4.5	Ferrite	Zn	70
POTF06-45A	Fe37	45	10.3	7	Ferrite	Ni	70
POTF06-45B	Fe37	45	10.3	4	Ferrite	Ni	70
POTF06-45C	Fe37	45	11	4.5	Ferrite	Zn	70
POTF06-45D	Fe37	45	10	6	Ferrite	Zn	70
POTF06-46	Fe37	46	7.1	4.76	Ferrite	Cr	100
POTF06-50	Fe37	50	10.5	8.5	Ferrite	Zn	180
POTF06-50B	Fe37	50	10.5	8.5	Ferrite	Zn	180
POTF06-50D	Fe37	50	10	8.5	Ferrite	Cr	180
POTF06-50E	Fe37	50	10	8.5	Ferrite	Zn	180
POTF06-50F	Fe37	50	10	8	Ferrite	Zn	180

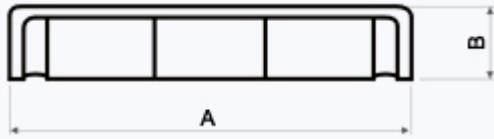


POTF06-51	Fe37	51	6.3	4.7	Ferrite	Cr	60
POTF06-51.6	Fe37	51.6	7.85	5.2	Ferrite	Cr	130
POTF06-51.6A	Fe37	51.6	8	7	Ferrite	Ni	150
POTF06-51.6B	Fe37	51.6	7.8	5	Ferrite	Cr	110
POTF06-52	Fe37	52	7.5	4	Ferrite	Cr	130
POTF06-52A	Fe37	52	7.5	5.2	Ferrite	Cr	135
POTF06-53	Fe37	53	11	6.5	Ferrite	Zn	180
POTF06-53A	Fe37	53	10.3	4	Ferrite	Ni	150
POTF06-55	Fe37	55	11	4.5	Ferrite	Zn	180
POTF06-55A	Fe37	55	10.3	8	Ferrite	Zn	150
POTF06-55B	Fe37	55.4	11.1	4.7	Ferrite	Zn	
POTF06-58.5	Fe37	58.5	11.5	20	Ferrite	Zn	
POTF06-60.2	Fe37	60.2	9	8	Ferrite	Cr	220
POTF06-60.3	Fe37	60.3	8.9	6.4	Ferrite	Cr	190
POTF06-63	Fe37	63	14	6.5	Ferrite	Zn	290
POTF06-63A	Fe37	63	14	6.5	Ferrite	Cr	290
POTF06-63B	Fe37	63	8	6.5	Ferrite	Cr	110
POTF06-67	Fe37	67	9.5	6.3	Ferrite	Cr	290
POTF06-67A	Fe37	67	9.5	7	Ferrite	Ni	290
POTF06-67B	Fe37	67	10.8	10.16	Ferrite	Zn	290
POTF06-67D	Fe37	67	9.5	6.6	Ferrite	Zn	290
POTF06-67E	Fe37	67	9.5	7.1	Ferrite	Cr	290
POTF06-67F	Fe37	66.8	9.5	7.1	Ferrite	Ni	290
POTF06-71	Fe37	71	15.3	10.5	Ferrite	Zn	350
POTF06-71A	Fe37	71	9.5	6.3	Ferrite	Cr	400
POTF06-71B	Fe37	71	15	23.5	Ferrite	Ni	250
POTF06-71C	Fe37	71	15	11.5	Ferrite	Zn	
POTF06-71D	Fe37	71	15	7	Ferrite	Zn	
POTF06-71.3	Fe37	71.3	9.5	7	Ferrite	Cr	290
POTF06-73.5	Fe37	73.5	11.5	40	Ferrite	Zn	
POTF06-76	Fe37	76	12	6	Ferrite	Zn	260
POTF06-77	Fe37	77	7	6	Ferrite	Cr	
POTF06-79.5	Fe37	79.5	11	8.3	Ferrite	Cr	350
POTF06-80	Fe37	80	18	6.5	Ferrite	Zn	475
POTF06-80A	Fe37	80	10.5	7.2	Ferrite	Cr	290
POTF06-80B	Fe37	80	11.11	9.525	Ferrite	Cr	300
POTF06-80C	Fe37	80	12.7	10.16	Ferrite	Zn	450
POTF06-80D	Fe37	80	17.8	6.5	Ferrite	Zn	540
POTF06-80E	Fe37	80	10	6.4	Ferrite	Cr	465
POTF06-81.3	Fe37	81.3	11	10.2	Ferrite	Ni	360
POTF06-81.3A	Fe37	81.3	11	7.1	Ferrite	Cr	360
POTF06-81.3B	Fe37	81.3	10.8	12.7	Ferrite	Cr	360

POTF06-81.3C	Fe37	81.3	10.7	7.1	Ferrite	Ni	150
POTF06-81.3D	Fe37	81.3	10.7	7.1	Ferrite	Cr	420
POTF06-81.3E	Fe37	81.3	11	9.5	Ferrite	Ni	400
POTF06-81.3F	Fe37	81.3	11.2	9.5	Ferrite	Zn	
POTF06-81.3G	Fe37	81.3	11.7	20.8	Ferrite	Epoxy	260
POTF06-83	Fe37	83	17.3	10.5	Ferrite	Zn	600
POTF06-88	Fe37	88	18	8.5	Ferrite	Ni	550
POTF06-88A	Fe37	88	18	13.5	Ferrite	Zn	480
POTF06-88C	Fe37	88	18	13.5	Ferrite	Cr	480
POTF06-95	Fe37	95	12.7	12.7	Ferrite	Cr	620
POTF06-96.3	Fe37	96.3	12.7	9.6	Ferrite	Cr	600
POTF06-96.3A	Fe37	96.3	12.7	6.35	Ferrite	Cr	
POTF06-98.3	Fe37	98.3	12.59	9.6	Ferrite	Zn	
POTF06-100	Fe37	100	22	10.5	Ferrite	Zn	680
POTF06-100A	Fe37	100	22	10.5	Ferrite	Cr	680
POTF06-124	Fe37	124	12.7	12.7	Ferrite	Cr	700
POTF06-124.46	Fe37	124.46	12.7	12.7	Ferrite	Cr	700
POTF06-126	Fe37	126	11.5	7	Ferrite	Cr	
POTN06-13	Fe37	13	4	2	NdFeB	Ni	
POTN06-16	Fe37	16	5	3.5	NdFeB	Ni	40
POTN06-20	Fe37	20	4	3.1	NdFeB	Zn	110
POTN06-20A	Fe37	20	7	4.5	NdFeB	Ni	55

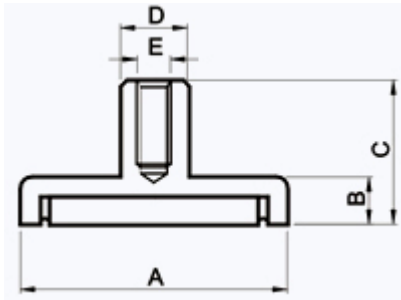
POTN06-25A	Fe37	25	7	6	NdFeB	Zn	
POTN06-25B	Fe37	25	8	5.5	NdFeB	Zn	150
POTN06-26	Fe37	26	5	9	NdFeB	Zn	150
POTN06-31	Fe37	29	3	6	NdFeB	Rubber	80
POTN06-32	Fe37	32	7	M5	NdFeB	Zn	330
POTN06-32A	Fe37	32	7	M5	NdFeB	Ni	
POTN06-36	Fe37	36	7.1	4.8	NdFeB	Zn	250
POTN06-40A	Fe37	40	8	5.5	NdFeB	Zn	200
POTN06-40B	Fe37	40	8	M5	NdFeB	Zn	500
POTN06-55	Fe37	55.4	11.1	4.7	NdFeB	Zn	
POTN06-81.3	Fe37	81.3	10.7	7.1	NdFeB	Ni	

**POT07 SERIES**



Item Code	POT			Magnet	Coating	Pull Force (N)
	Material	A	B			
POTF07-85.6	Fe37	85.6	17.8	Ferrite	Zn	600
POTF07-110	Fe37	110	22.8	Ferrite	Zn	680
POTF07-120.5	Fe37	120.5	22.8	Ferrite	Zn	1000

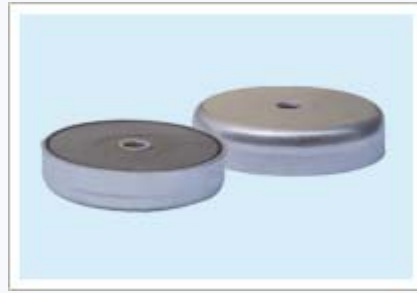
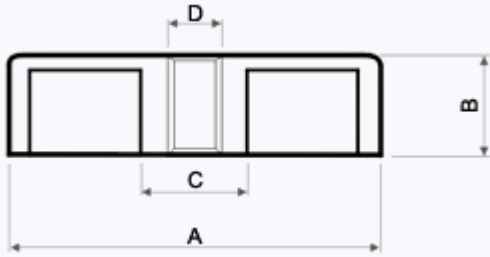
### POT08 SERIES



Item Code	POT						Magnet	Coating	Pull Force (N)
	Material	A	B	C	D	E			
POTF08-10	Fe37	10	4.5	11.5	6	M3	Ferrite	Zn	4
POTF08-13	Fe37	13	4.5	11.5	6	M3	Ferrite	Zn	10
POTF08-16	Fe37	16	4.5	11.5	6	M3	Ferrite	Zn	18
POTF08-20	Fe37	20	6	13	6	M3	Ferrite	Zn	30
POTF08-25	Fe37	25	7	15	8	M4	Ferrite	Zn	60
POTF08-25C	Fe37	25	7	15	8	M4	Ferrite	Ni	40
POTF08-25D	Fe37	25	7	15	8	M4	Ferrite	Zn	40
POTF08-25E	Fe37	25	8	15	8	M4	Ferrite	White paint	40
POTF08-25F	Fe37	25	7	15	8	M4	Ferrite	Cr	40
POTF08-32	Fe37	32	7	15	8	M4	Ferrite	Zn	80
POTF08-32A	Fe37	32	7	15	8	M4	Ferrite	White paint	75
POTF08-36	Fe37	36	7.7	16	8	M4	Ferrite	Zn	100
POTF08-40	Fe37	40	8	16.5	8	M4	Ferrite	Zn	125
POTF08-40A	Fe37	40	8	18	10	M5	Ferrite	Zn	125
POTF08-40B	Fe37	40	8.5	16.5	8	M4	Ferrite	White paint	100
POTF08-40C	Fe37	40	8	18	10	M5	Ferrite	Zn	100

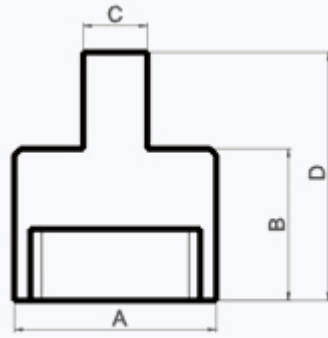
POTF08-47	Fe37	47	9	17	8	M4	Ferrite	Zn	180
POTF08-50	Fe37	50	10	18.5	8	M4	Ferrite	Zn	220
POTF08-50A	Fe37	50	10	22	12	M6	Ferrite	Zn	220
POTF08-50B	Fe37	50	10	18.5	8	M4	Ferrite	Cr	220
POTF08-50C	Fe37	50	10.5	18.5	8	M4	Ferrite	White paint	220
POTF08-57	Fe37	57	10.5	18.5	8	M4	Ferrite	Zn	280
POTF08-57A	Fe37	57	11	19	8	M4	Ferrite	White paint	250
POTF08-57C	Fe37	57	10.6	18.5	12	M4	Ferrite	White paint	250
POTF08-63	Fe37	63	14	30	15	M8	Ferrite	Zn	350
POTF08-63A	Fe37	63	14	28	15	M8	Ferrite	Zn	350
POTF08-80	Fe37	80	18	34	20	M10	Ferrite	Zn	600
POTF08-80A	Fe37	80	18	34	20	M10	Ferrite	Cr	600
POTF08-100	Fe37	100	22	43	22	M12	Ferrite	Zn	900
POTF08-125	Fe37	125	26	50	25	M14	Ferrite	Zn	1300
POTF08-125A	Fe37	125	26	50	25	M14	Ferrite	Cr	1300
POTF08-125B	Fe37	125	26	50	25	M10	Ferrite	Cr	1300
POTN08-06	Fe37	6	4.5	11.5	6	M3	NdFeB	Zn	5
POTN08-08	Fe37	8	4.5	11.5	6	M3	NdFeB	Zn	13
POTN08-10C	Fe37	10	4.5	11.5	6	M3	NdFeB	Zn	25
POTN08-13	Fe37	13	4.5	11.5	6	M3	NdFeB	Zn	45
POTN08-16	Fe37	16	4.5	11.5	6	M4	NdFeB	Zn	55
POTN08-16A	Fe37	16	6	11.5	8	M4	NdFeB	Zn	55
POTN08-16C	Fe37	16	4.5	11.5	6	M4	NdFeB	Ni	55
POTN08-16F	Fe37	16	5	13	6	M4	NdFeB	Zn	55
POTN08-16G	Fe37	16	8	15	6	M4	NdFeB	Zn	55
POTN08-20	Fe37	20	6	13	8	M4	NdFeB	Zn	140
POTN08-20C	Fe37	20	8	15.5	10	M5	NdFeB	Zn	140
POTN08-20E	Fe37	20	6	13	8	M4	NdFeB	Ni	140
POTN08-25	Fe37	25	7	14	8	M4	NdFeB	Zn	200
POTN08-25C	Fe37	25	8	17	10	M5	NdFeB	Cr	200
POTN08-25D	Fe37	25	7	14	8	M4	NdFeB	Ni	200
POTN08-32	Fe37	32	7	15.5	10	M5	NdFeB	Zn	350
POTN08-32C	Fe37	32	7	15.5	12	M8	NdFeB	Zn	350
POTN08-34.5	Fe37	34.5	9.5	12	20	6.5	NdFeB	Zn	500
POTN08-42	Fe37	42	7	15.5	10	M4	NdFeB	Ni	650
POTN08-43A	Fe37	43	5.1	10.3	8	M4	NdFeB	rubber	128
POTN08-88	Fe37	80	3	13.8	12	M6	NdFeB	rubber	430
POTS08-13	Fe37	13	4.5	11.5	6	M3	SmCo	Ni	50

POT09 SERIES



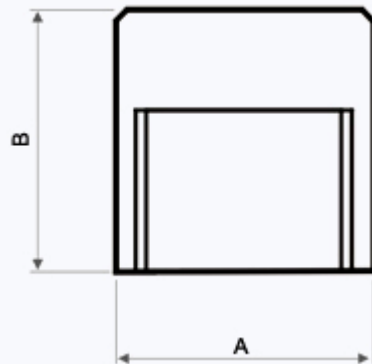
Item Code	POT					Magnet	Coating	Pull Force(N)
	Material	A	B	C	D			
POTF09-25	Fe37	25	7	5.2	M4	Ferrite	Zn	36
POTF09-32	Fe37	32	7	5.2	M4	Ferrite	Zn	75
POTF09-32A	Fe37	32	7	9	Φ5.2	Ferrite	Cr	75
POTF09-40	Fe37	40	8	5.2	M4	Ferrite	Zn	90
POTF09-40A	Fe37	40	8	10	M4	Ferrite	Zn	100
POTF09-40B	Fe37	40	8	9.5	M5	Ferrite	Zn	90
POTF09-50	Fe37	50	10	12	M6	Ferrite	Zn	170
POTF09-50A	Fe37	50	10	12	M8	Ferrite	Zn	170
POTF09-50B	Fe37	50	10	18	M8	Ferrite	Cr	170
POTF09-50C	Fe37	50	10	19	Φ6.2	Ferrite	Cr	170
POTF09-50D	Fe37	50	9.5	14	Φ6.2	Ferrite	Zn	170
POTF09-50E	Fe37	50	10	14	M6	Ferrite	ZN	180
POTF09-63	Fe37	63	14	13	M8	Ferrite	Zn	350
POTF09-63A	Fe37	63	14	20	M8	Ferrite	Cr	350
POTF09-63B	Fe37	63	14	20.5	6.5	Ferrite	Zn	290
POTF09-63C	Fe37	63	13	20	M10	Ferrite	Zn	
POTF09-63D	Fe37	63	14	12	M8	Ferrite	Zn	280
POTF09-76	Fe37	76	11.6	25	Φ6.2	Ferrite	Cr	400
POTF09-80	Fe37	80	18	14.5	M8	Ferrite	Zn	550
POTF09-80A	Fe37	80	18	14.5	M10	Ferrite	Zn	550
POTF09-80B	Fe37	80	20	14.5	M8	Ferrite	Zn	550
POTF09-80C	Fe37	80	20	14.5	M10	Ferrite	Zn	550
POTF09-80D	Fe37	80	20	27	M6	Ferrite	Zn	550
POTF09-80E	Fe37	80	20	27	M10	Ferrite	Zn	400
POTF09-80G	Fe37	80	18	27	M10	Ferrite	Zn	540
POTF09-88	Fe37	87.7	23	27	M10	Ferrite	Zn	

### POT10 SERIES



Item Code	POT					Magnet	Coating
	Material	A	B	C	D		
POTA10-06	Fe37	6	20	3	28	ALNiCo	Zn
POTA10-08	Fe37	8	20	3	28	ALNiCo	Zn
POTA10-10	Fe37	10	20	4	28	ALNiCo	Zn
POTA10-13	Fe37	13	20	4	28	ALNiCo	Zn
POTA10-16	Fe37	16	20	5	28	ALNiCo	Zn
POTA10-20	Fe37	20	25	6	33	ALNiCo	Zn
POTA10-25	Fe37	25	35	8	45	ALNiCo	Zn
POTA10-32	Fe37	32	40	10	50	ALNiCo	Zn
POTA10-40	Fe37	40	50	15	70	ALNiCo	Zn
POTA10-50	Fe37	50	60	18	85	ALNiCo	Zn
POTA10-63	Fe37	63	65	20	95	ALNiCo	Zn

### POT11 SERIES



Item Code	POT			Magnet	Coating
	Material	A	B		
POTA11-06	Fe37	6	6	ALNiCo	NI
POTA11-06A	Fe37	6	10	ALNiCo	ZN
POTA11-06B	Fe37	6	12	ALNiCo	ZN
POTA11-06C	Fe37	6	7	ALNiCo	CR
POTA11-06D	Fe37	6	20	ALNiCo	ZN

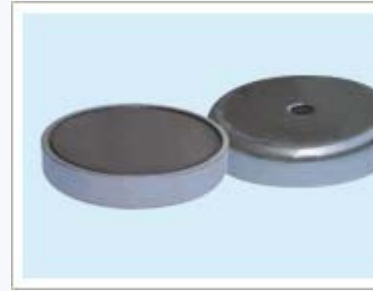
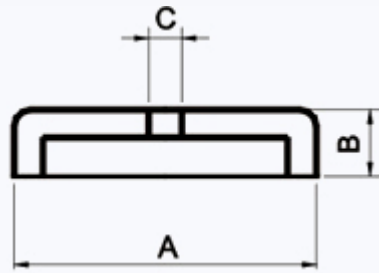
POTA11-6.5	Fe37	6.5	19	ALNiCo	ZN
POTA11-08	Fe37	8	8	ALNiCo	ZN
POTA11-08A	Fe37	8	12	ALNiCo	CR
POTA11-08B	Fe37	8	10	ALNiCo	ZN
POTA11-10	Fe37	10	10	ALNiCo	ZN
POTA11-10A	Fe37	10	16	ALNiCo	ZN
POTA11-12	Fe37	12	16	ALNiCo	ZN
POTA11-12.7	Fe37	12.7	13	ALNiCo	ZN
POTA11-13	Fe37	13	18	ALNiCo	ZN
POTA11-15	Fe37	15	20	ALNiCo	ZN
POTA11-16	Fe37	16	20	ALNiCo	ZN
POTA11-17.5	Fe37	17.5	16	ALNiCo	ZN
POTA11-17.5A	Fe37	17.5	11	ALNiCo	ZN
POTA11-20	Fe37	20	24	ALNiCo	ZN
POTA11-20A	Fe37	20	25	ALNiCo	ZN
POTA11-20.6	Fe37	20.6	19	ALNiCo	ZN
POTA11-25	Fe37	25	30	ALNiCo	ZN
POTA11-27	Fe37	27	25.4	ALNiCo	ZN
POTA11-32	Fe37	32	35	ALNiCo	ZN
POTA11-32A	Fe37	32	40	ALNiCo	ZN
POTA11-35	Fe37	35	20	ALNiCo	ZN
POTA11-35A	Fe37	35	30	ALNiCo	ZN
POTA11-40	Fe37	40	45	ALNiCo	ZN
POTA11-45	Fe37	45	30	ALNiCo	ZN
POTA11-50	Fe37	50	40	ALNiCo	ZN
POTA11-50A	Fe37	50	50	ALNiCo	ZN
POTA11-63	Fe37	63	60	ALNiCo	ZN
POTN11-12	Fe37	12.3	8.1	NDFEB	ZN

### POT12 SERIES



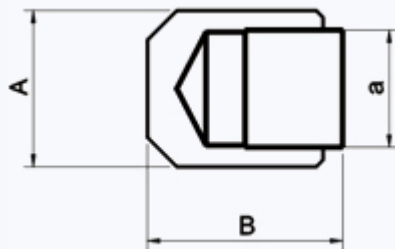
Item Code	POT			Magnet	Coating
	Material	A	B		
POTN12-21	Fe37	21	4.2	NdFeB	Ni

### POT13 SERIES



Item Code	POT				Magnet	Coating
	Material	A	B	C		
POTN13-25	Fe37	25	5.3	4	NdFeB	Cr
POTN13-45C	Fe37	45	5.5	4.5	NdFeB	Ni
POTN13-50	Fe37	51	8.9	5.2	NdFeB	Zn

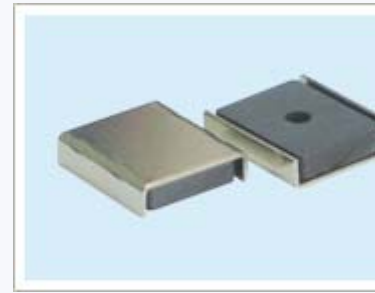
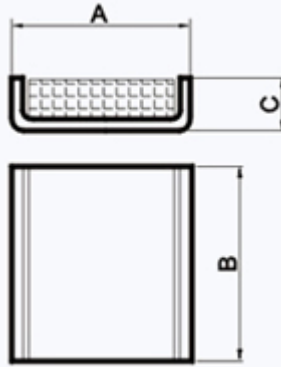
### POT14 SERIES



Item Code	POT				Magnet	
	Material	A	B	a		
POTN14-05	Al	5	8	4	NdFeB	
POTN14-6.5	Al	6.5	10	5	NdFeB	
POTN14-08	Al	8	10	6	NdFeB	
POTN14-10	Al	10	9	6	NdFeB	

### PY SERIES

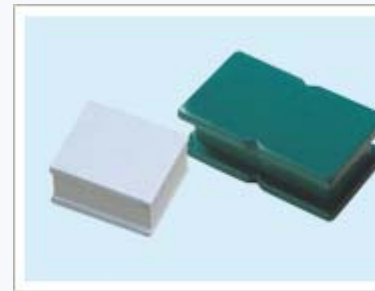




ITEM	Yoke	MAGNET	
	SIZE(AXBXC)		
PY05-01	23.5X25.5X6.9	Ferrite	
PY05-01A	23X25.5X6.9	Ferrite	
PY05-03	17X20X5.2	Ferrite	
PY05-04	22.5X25.5X6	Ferrite	
PY05-06	23X28.7X7	Ferrite	
PY05-18	25.8X24X6.6	Ferrite	
PY05-20A	41.5X63.5X19.5	NdFeB	
PY05-26	12.28X25X5	Ferrite	
PY05-48	23.3X29.5X6.5	Ferrite	
PY05-49	50.8X50.8X12.7	Ferrite	

Note:1.customer designs are acceptable

### PV SERIES



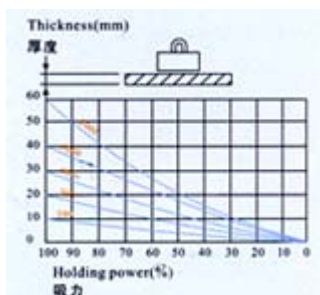
Item No.	Magnet Pole		Magnet	
	Size	Coating	Size	Material
PV02-01	F50X30X4	Glue paint	F48X22X10	Ferrite
PV02-02	F44X26X5	Zn	F42X25X17.6	Ferrite
PV02-03	F16X13.3X1.2	Zn	F16.5X9.5X5	Ferrite
PV02-04	F45X30X3	Zn	F45X27X8	Ferrite
PV02-05	F25X22.5X3	Zn	F25X20.5X6	Ferrite
PV02-05A	F25X22.5X3	Zn	F25X20.5X6	Ferrite
PV02-06	F35X30X4	Zn	F34X29X12	Ferrite

PV02-06A	F35X30X4	Zn	F34X29X12	Ferrite
PV02-07	F10.3X6.3X1.5	Zn	F5X5X1.5	NdFeB
PV02-08	F10X6X1.5	Zn	F10X5X1.5	NdFeB
PV02-09	F60X6X6	Zn	Φ12X3	NdFeB
PV02-10	F50X6X6	Zn	Φ10X4	NdFeB
PV02-11	F41.5X11X1	Zn	Φ8X2	NdFeB
PV02-12	F130X13X(1-1.5)	Zn	F43X12X6	Ferrite

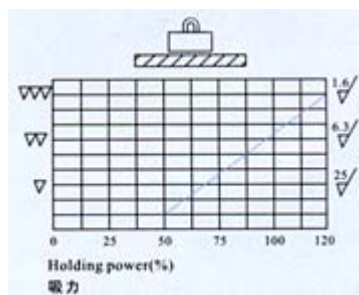
Note:1.customer designs are acceptable

Type	Lifting Strength
	(KGS)
CSYQ100(A,E)	100
CSYQ300(A,B,C,D,E)	300
CSYQ600(A,BC,D)	600
CSYQ1000(A,B,C,D)	1000
CSYQ2000(A,B,C,D,E)	2000
CSYQ3000(A)	3000
CSYQ6000(A)	6000

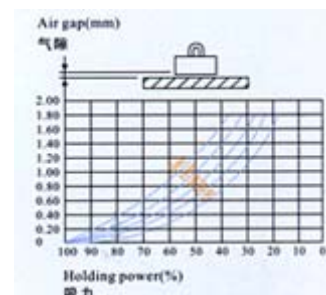
Our permanent magnetic lifter has strong magnetic path produced by NdFeB magnet. On and off of the magnetic path is controlled by turning the manual handle. The lifters have the features of strong attraction, smaller volume, lighter weight, powerful lifting effort, easy and safe to operate, long-period effort and without power supply. They are been used to lift and transport the steel and iron for factories, docks, ware houses, transportation etc.



Thickness of load and holding power



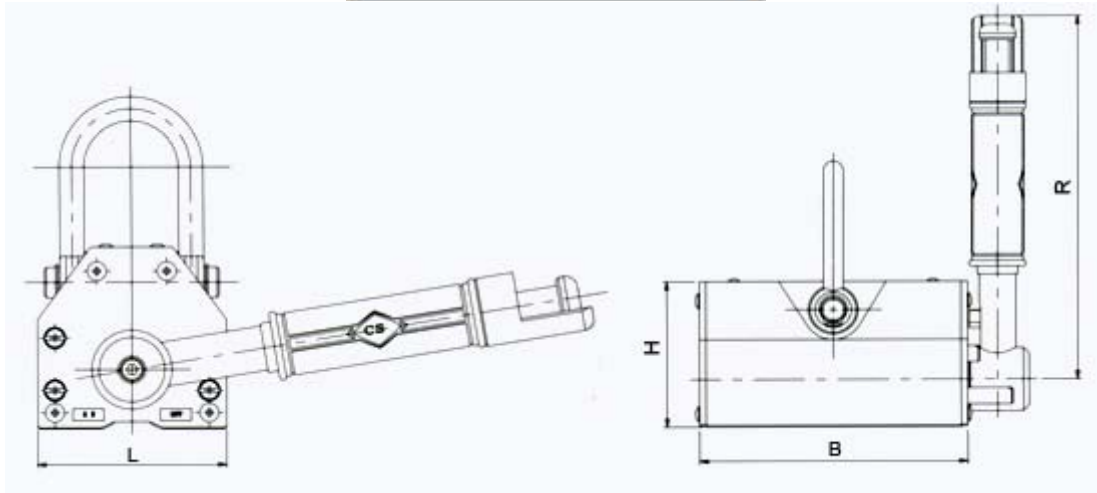
Air gap and holding power



Surface finish and holding power

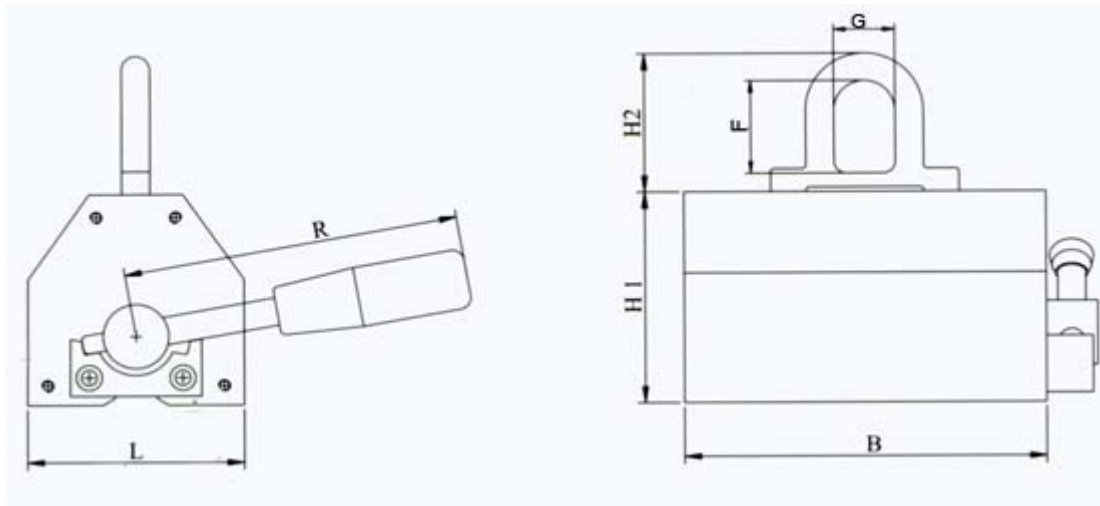
**According to customer's different requirements, we manufacture five series permanent magnet lifters**

## A Series



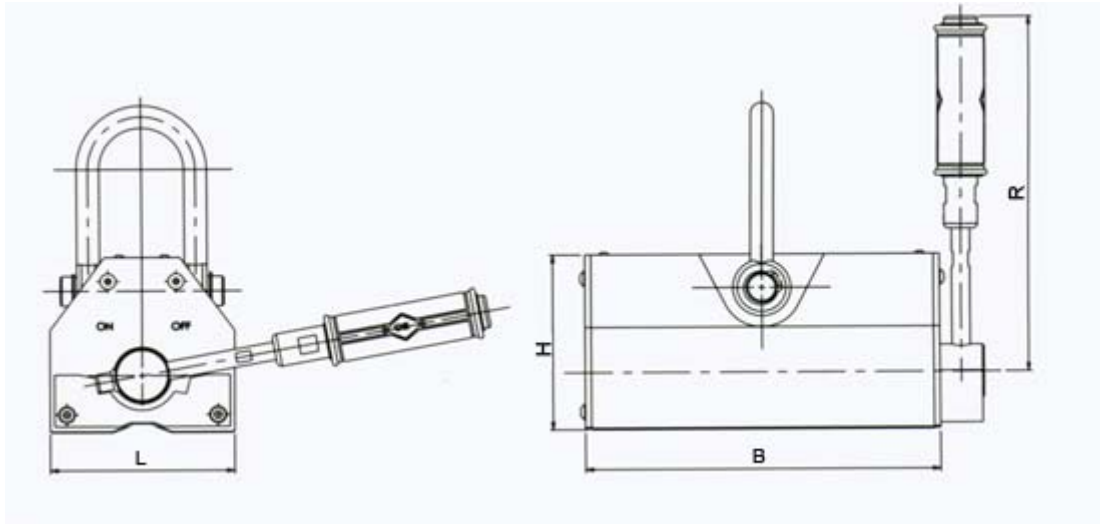
型号 Model	额定起重力 Rated lifting strength(Kgf)	圆柱形起重力 Cylindrical lifting strength(Kgf)	最大拉脱力 Max.pull-off strength(Kgf)	L	B	H	R	使用温度 Operation temperature(°C)	自重 Dead weight(Kg)
CSYQ100A	100	50	350	64	92	67	107	<80	3.0
CSYQ300A	300	150	1050	92	162	91	155	<80	7.5
CSYQ600A	600	300	2100	122	233	118	196	<80	23.0
CSYQ1000A	1000	500	3500	179	268	164	255	<80	55.5
CSYQ2000A	2000	1000	7000	234	378	212	426	<80	125.0
CSYQ3000A	3000	1500	10500	310	497	252	505	<80	220.0
CSYQ6000A	6000	3000	21000	442	621	210	548	<80	440.0

## B Series



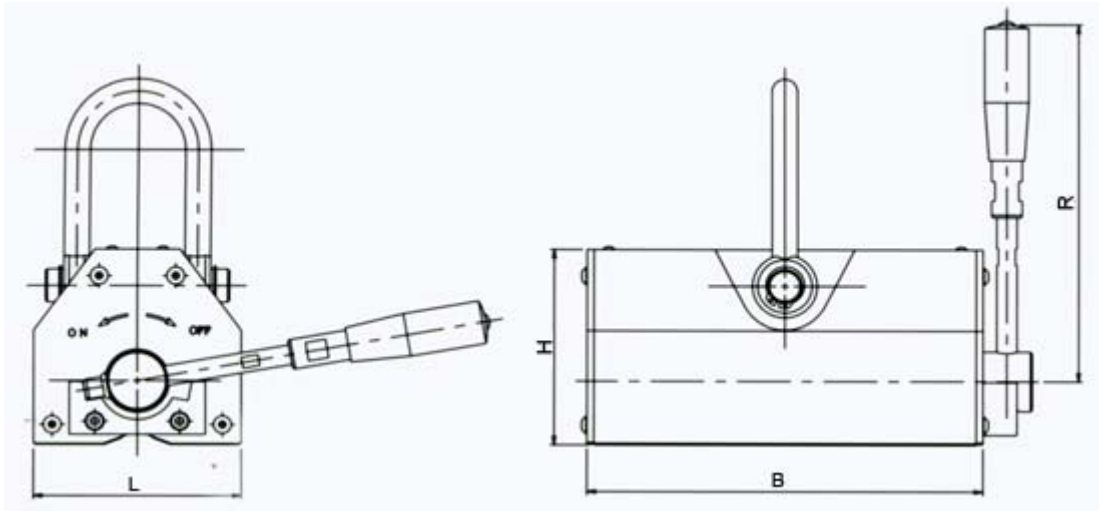
型号 Model	额定起重力 Rated lifting strength (Kgf)	圆柱形起重 力 Cylindrical lifting strength (Kgf)	最大拉脱 力 Max. pull-off strength (Kgf)	L	B	R	H1	H2	F	G	使用温度 Operation temperature (°C)	自重 Dead weight(Kg)
CSYQ100B	100	50	350	64	92	148	67	54	35	28	<80	3.0
CSYQ300B	300	150	1050	92	162	180	91	70	47	40	<80	7.5
CSYQ600B	600	300	2100	122	233	185	118	95	64	50	<80	23.0
CSYQ1000B	1000	500	3500	179	268	210	164	95	64	50	<80	55.5
CSYQ2000B	2000	1000	7000	234	378	365	212	120	80	60	<80	125.0

## C Series



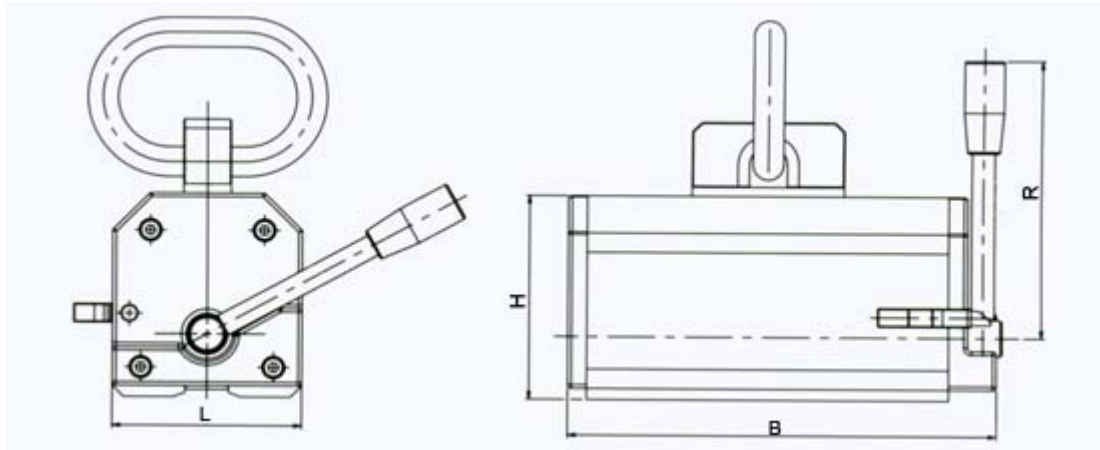
型号 Model	额定起重力 Rated lifting strength(Kgf)	圆柱形起重力 Cylindrical lifting strength(Kgf)	最大拉脱力 Max.pull-off strength(Kgf)	L	B	H	R	使用温度 Operation temperature(°C)	自重 Dead weight(Kg)
CSYQ100C	100	50	350	64	92	67	107	<80	3.0
CSYQ300C	300	150	1050	92	162	91	207	<80	7.5
CSYQ600C	600	300	2100	122	233	118	247	<80	23.0
CSYQ1000C	1000	500	3500	179	268	164	275	<80	55.5
CSYQ2000C	2000	1000	7000	234	378	212	370	<80	125.0

## D Series



型号 Model	额定起重力 Rated lifting strength(Kgf)	圆柱形起重力 Cylindrical lifting strength(Kgf)	最大拉脱力 Max.pull-off strength(Kgf)	L	B	H	R	使用温度 Operation temperature(°C)	自重 Dead weight(Kg)
CSYQ100D	100	50	350	64	92	67	148	<80	3.0
CSYQ300D	300	150	1050	92	162	91	180	<80	7.5
CSYQ600D	600	300	2100	122	233	118	185	<80	23.0
CSYQ1000D	1000	500	3500	179	268	164	210	<80	55.5
CSYQ2000D	2000	1000	7000	234	378	212	365	<80	125.0

## E Series



型号 Model	额定起重力 Rated lifting strength(Kgf)	圆柱形起重力 Cylindrical lifting strength(Kgf)	最大拉脱力 Max.pull-off strength(Kgf)	L	B	H	R	使用温度 Operation temperature(℃)	自重 Dead weight(Kg)
CSYQ100E	100	50	300	60	114	65	136	<80	3.0
CSYQ150E	150	75	450	60	147	65	136	<80	3.5
CSYQ200E	200	100	600	80	140	85	136	<80	6.0
CSYQ300E	300	150	900	80	170	91	136	<80	9.5
CSYQ500E	500	250	1500	100	225	110	150	<80	16.0
CSYQ1000E	1000	500	3000	176	300	165	285	<80	58.0
CSYQ2000E	2000	1000	6000	200	400	210	335	<80	116.5